



Marking the future with you

Micromobility markings makes traffic safer

It's time for safety, health and environment to take the front seat



The need for micromobility is now

The United Nations predicts that by the year 2050, over 60 % of the global population will live in cities. This is expected to put increased pressure on the urban infrastructure that will need to be adapted to keep up with this trend.

At Geveko Markings, we believe that everybody should be able to feel safe in traffic. No matter which means of transportation you use, there should be room for you on the roads. This is a growing issue especially in the increasingly populated cities, and micromobility offers one of the solutions to this problem.

This concept helps increase safety for especially the vulnerable road users, while at the same having a positive effect on health issues, the environment and the increasingly intense traffic flow.



Safer cities with micromobility

- Heighten road safety with clearly marked areas for cyclists and other micromobility users that makes it easy for everyone to see where to drive
- Increase traffic flow by allocating lanes and space for micromobility vehicles separating them from the rest of the road
- Gain positive influence on public health and environment by encouraging more people to take the bike instead of the car
- Increase the skid resistance and grip of the lane to decrease slip injuries
- Enhance the feeling of safety and acceptance of the cyclist
- Give guidance to cyclists in the city
- Make car and truck drivers more aware of cyclists and their routes with brightly colored areas dedicated to cyclists and other micromobility users

What is micromobility?

Bikes are a big part of micromobility, but it covers other modes of electric or human powered transport as well. Micromobility vehicles are usually characterised by going at a low (25 km/h) to medium (45 km/h) speed and includes for example e-bikes and e-scooters.

The purpose of micromobility markings is to separate vehicles in this category from the rest of the road where cars and other engine powered vehicles are usually dominant.

Making traffic safer for everyone

In order to become a strong alternative to traditional modes of traffic, micromobility infrastructure needs to be developed so that it is easy, logical and not least safe to use.

Whether being coloured areas, clearly marked out routes and directions or safe parking guidance, micromobility markings allow the more vulnerable road users to ride safely at their own speed. This creates less risks of accidents without affecting the flow of road traffic.

Clearly marked out lanes also makes it easier for motorists to judge how much space to allow when passing a bicycle, preventing them from swerving into the cyclist's space.

One concept – many advantages

In addition to increasing safety, micromobility also targets health and environment issues. If more people are encouraged to choosing the bike over the car, it will heighten their activity level leaving a positive effect on both personal and public health. More electric and human powered vehicles on the road will also lead to a lower level of traffic pollution.

We got you covered

Everything you need for your micromobility applications

Country specific symbols

With our PREMARK™ preformed material, we are able to supply any symbol that conform to individual national or regional design manuals.

The PREMARK symbols are quick and easy to apply and do not require any investment in expensive equipment. The ready-to-use marking is applied by help of a heat torch and can be laid all year round. The only requirement is a dry application surface, which the heat torch can easily provide.



Area demarcation

Our range of safety marking materials, provide a cost-effective and fast-drying solution. Our cold plastic PlastiRoute™ material and waterborne AquaRoute™ paint are both ideal for area applications.

Unique crosslinking technology provides long-term stability, fast drying time, skid resistance and color stability. Both AquaRoute and PlastiRoute has a consistent intermix of anti-skid aggregate which means it eliminates the need to post-sprinkle anti-skid aggregates during the application process.

When using the AreaSpray™ machine (available through Geveko Markings), the material is sprayed in an even and consistent pattern. This creates a strong texture with superior skid resistance - even in wet conditions. It also enables a quicker application, saving both man hours and time for closed traffic.

By combining colour demarcation products with preformed thermoplastic, you get a complete solution for your micromobility lane project.

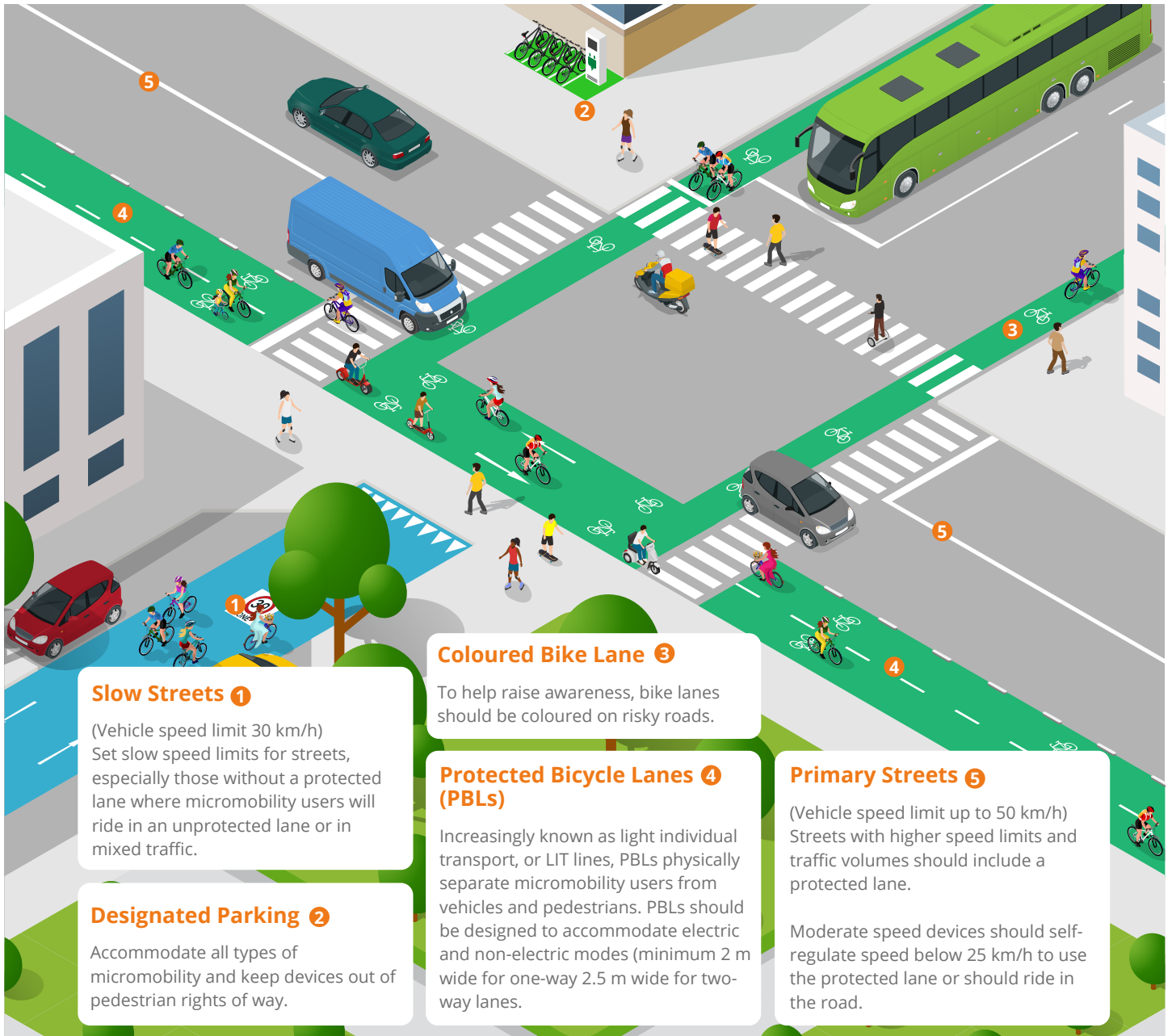
Custom design of your PREMARK™

Our material can be designed to fit all requirements. In fact, the only limit is your imagination. Our modern and flexible manufacturing facilities enable us to react quickly to special requests and our long experience allows us to provide high-quality, flexible and easy-to-apply materials.

The composition of the thermoplastic marking provides a high UV resistance, which means that colours stay bright for longer.



Micromobility recommendations



Slow Streets 1

(Vehicle speed limit 30 km/h)
Set slow speed limits for streets, especially those without a protected lane where micromobility users will ride in an unprotected lane or in mixed traffic.

Designated Parking 2

Accommodate all types of micromobility and keep devices out of pedestrian rights of way.

Coloured Bike Lane 3

To help raise awareness, bike lanes should be coloured on risky roads.

Protected Bicycle Lanes (PBLs) 4

Increasingly known as light individual transport, or LIT lines, PBLs physically separate micromobility users from vehicles and pedestrians. PBLs should be designed to accommodate electric and non-electric modes (minimum 2 m wide for one-way 2.5 m wide for two-way lanes).

Primary Streets 5

(Vehicle speed limit up to 50 km/h)
Streets with higher speed limits and traffic volumes should include a protected lane.

Moderate speed devices should self-regulate speed below 25 km/h to use the protected lane or should ride in the road.



Bicycle area markings: 0.25 x 0.5m, line spacing 0.5:0.2m



Custom PREMARK symbols guide users around the city



Red-coloured bicycle lanes: Layer thickness: 1-2mm - for heavy loads: 3mm. PlastiRoute + PREMARK symbols and arrows)

Benefit from our expertise

We have handpicked these products to make your application a success



PREMARK™

PREMARK is a preformed thermoplastic road marking, which is ready to use on delivery and can be laid all year round. Lasting 6-8 times longer than paint, PREMARK offers a durable and cost-effective solution that saves you the task of frequent remarking. With PREMARK you are ensured optimal performance and superior visibility through the lifespan of the marking. This is due to the high content of glass beads which are slowly revealed as the marking is worn.



PlastiRoute™ Rollplast & Rollgrip

PlastiRoute Rollplast and Rollgrip are rollable, solvent-free road marking materials that cures via peroxide initiator. They have been developed for hand application with paint rollers.

The difference between the two is the amount of texture you can achieve. Choose PlastiRoute Rollplast for a finer texture and PlastiRoute Rollgrip for the most extreme texture.



PlastiRoute™ Sprayplast & Spraygrip

Both PlastiRoute Sprayplast and Spraygrip are ideal for large areas and provide strong skid resistance and high durability with a long life time.

They are solvent-free and cures via peroxide initiator. The addition of peroxide independently is a great benefit with AreaSpray as it prevents the liquid from curing in the machine and also minimises waste.



AquaRoute™ Deco rough

AquaRoute Deco rough is a two-component liquid already mixed. Meaning you can apply it directly out of the bucket. Being water-based, the material is well-suited for spray application to ensure an even surface and optimal adhesion.

Application methods

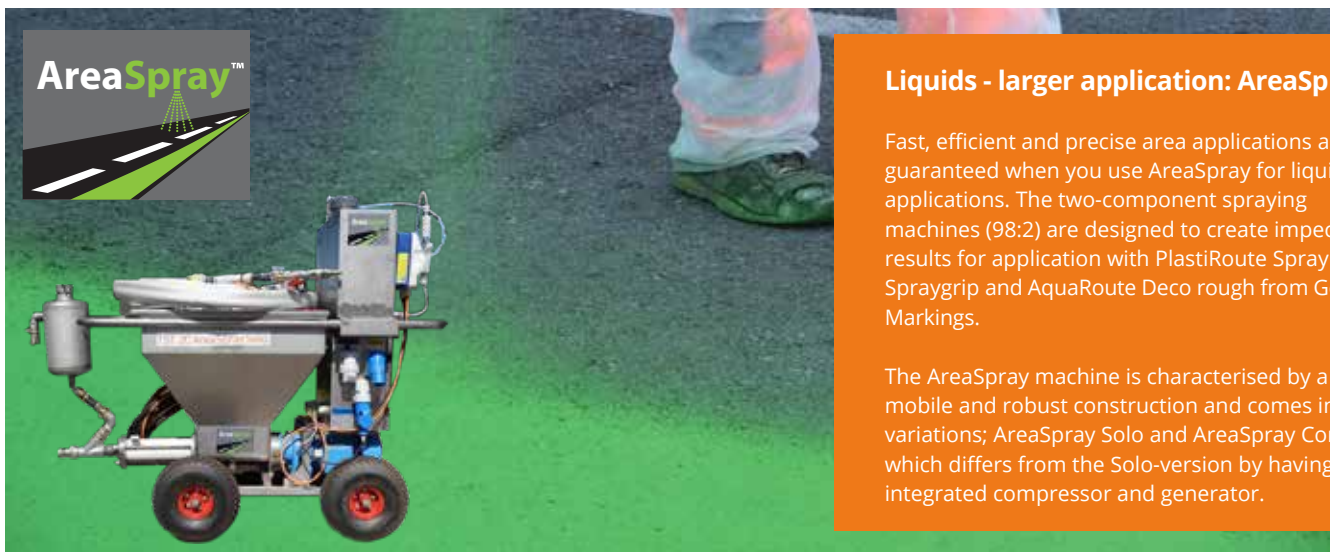
Choosing the right tool / application method makes all the difference



Liquids - smaller application: Roller

We recommend the use of a paint roller for small to medium sized areas. This method combined with our specialised products adds a heavy texture for increased skid resistance.

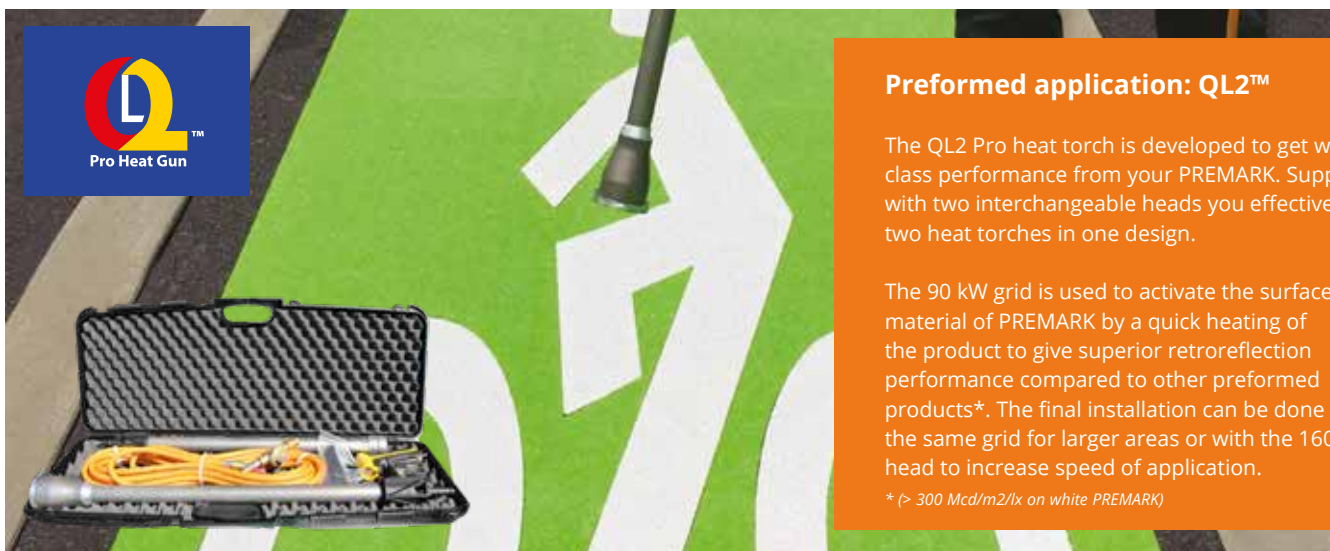
PlastiRoute™ Rollgrip and Rollplast are both very thixotropic which means that they do not level or flow after rolling. This makes them ideal for application with rollers.



Liquids - larger application: AreaSpray™

Fast, efficient and precise area applications are guaranteed when you use AreaSpray for liquid applications. The two-component spraying machines (98:2) are designed to create impeccable results for application with PlastiRoute Sprayplast/ Spraygrip and AquaRoute Deco rough from Geveko Markings.

The AreaSpray machine is characterised by a mobile and robust construction and comes in two variations; AreaSpray Solo and AreaSpray Compact which differs from the Solo-version by having an integrated compressor and generator.



Preformed application: QL2™

The QL2 Pro heat torch is developed to get world class performance from your PREMARK. Supplied with two interchangeable heads you effectively get two heat torches in one design.

The 90 kW grid is used to activate the surface material of PREMARK by a quick heating of the product to give superior retroreflection performance compared to other preformed products*. The final installation can be done with the same grid for larger areas or with the 160 kW head to increase speed of application.

* (> 300 Mcd/m2/lx on white PREMARK)



Dedicated to creating the most efficient solutions for you



Geveko Markings is a leading manufacturer and supplier of a full range of materials for road markings and decorative horizontal applications. Our business concept is to develop and provide high-quality marking materials that contribute to increased road safety and create decorative horizontal surfaces. Moreover, it is an essential part of our business to add value through our close cooperation and strong partnerships with customers, specifiers and authorities.

Specialists in horizontal markings

Geveko Markings was founded in 1924 and has produced road marking material since 1946. Today, we are a worldwide market leading brand with nearly a century of expert knowledge behind us. Although we are rooted in our history, we are always headed forward. The essence of our company continues to be our passion for delivering high quality marking materials and superior customer experiences.

Global footprint

With 11 production facilities and sales people located in more than 20 countries around the world, Geveko Markings is the definition of a truly international company. We continue to add our mark to new territories, and through resellers, contractors and local authorities our products are available in over 80 countries across the globe.

Committed to the environment

At Geveko Markings, we are committed to reducing the impact of our activities on the environment. Therefore, we seek to manage our environmental performance in a systematic manner that contributes to a sustainable way of doing business. As a natural step in this direction, we are certified in accordance with ISO 14001 – the world's most recognised environmental management system.



GEVEKO MARKINGS

sales@gevekomarkings.com • www.geveko-markings.com

